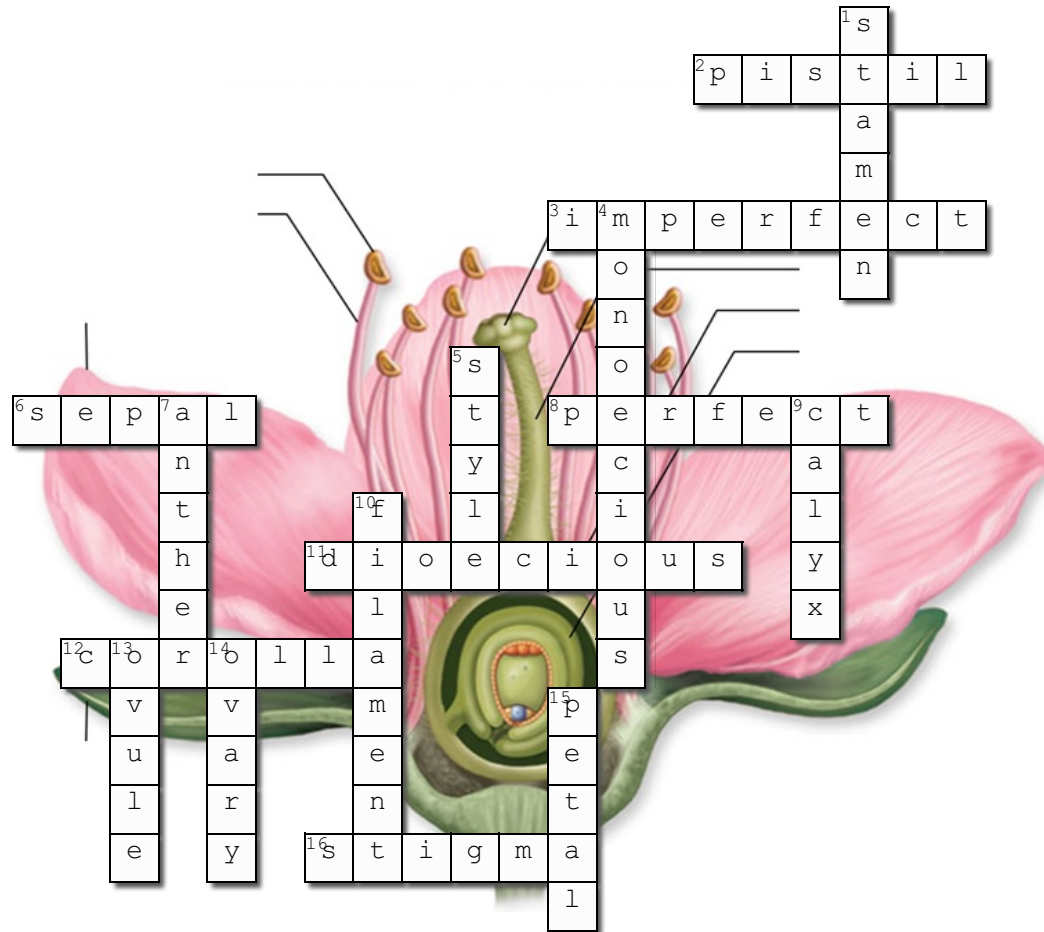


Parts of a Flower

Complete the following crossword puzzle



Created using the Crossword Maker on TheTeachersCorner.net

Across

2. the female reproductive organ (**pistil**)
3. a flower that has the male sex organs or the female sex organs, but not both on the same flower (**imperfect**)
6. the part of which encloses and protects the bud before it opens (**sepal**)
8. a flower that contains both female and male sex organs (**perfect**)
11. male and female reproductive organs are found on two different plants (**dioecious**)
12. more than one petal (**corolla**)
16. the sticky upper part of the pistil were pollen is deposited (**stigma**)

Down

1. the male reproductive organ (**stamen**)
4. male and female reproductive organs are found on the same plant but on two different branches (**monoecious**)
5. the long tube that carries pollen from the top of the pistil to the bottom of the pistil (**style**)
7. the sac the contains pollen (**anther**)
9. more than one sepal (**calyx**)
10. the thin, stem-like stalk supporting the anther (**filament**)
13. the female reproductive cells that are also called the eggs (**ovule**)
14. found at the base of the pistil containing the eggs (**ovary**)
15. colorful and often scented part of the flower that attracts pollinators (**petal**)